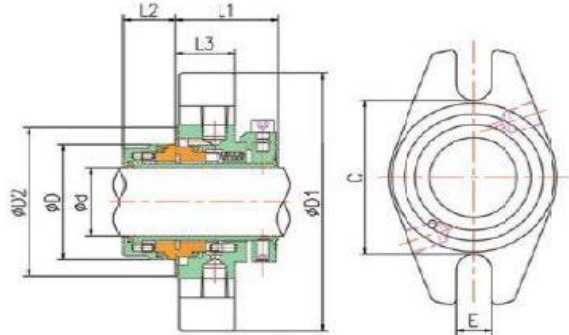


# RB Cartridge



## SINGLE CARTRIDGE



d	C	D	D1	D2	E	L1	L2	L3
24	62	43.5	104	60	12.5	38	19	22
25	62	43.5	104	60	12.5	38	19	22
28	62	46.5	104	60	12.5	38	19	22
30	65	48.5	104	63	12.5	38	19	22
32	67	50	104	66	12.5	38	19	22
33	67	50	104	65	12.5	38	19	22
35	70	53.5	115	68	12.5	38	19	22
38	75	56.5	125	72	14.7	38	19	22
40	75	53.5	125	73	14.7	38	19	22
43	80	61.5	133	78	14.7	38	19	22
45	81	63.5	140	79	14.7	38	19	22
48	84	66.5	140	82	14.7	38	19	22
50	87	68.5	140	85	14.7	38	19	22
53	90	71.5	150	88	17.5	38	19	22
55	92	73.5	150	90	17.5	38	19	22
60	100	78.5	160	98	17.5	38	19	22
65	105	83.5	165	103	17.5	38	19	22
70	120	88.5	180	118	17.5	38	19	22
75	125	100	190	123	17.5	36	26	23
80	130	105	190	128	17.5	36	26	23
85	135	110	220	133	21.5	36	26	23
90	140	115	220	138	21.5	36	26	23
95	145	120	220	143	21.5	36	26	23
100	150	125	220	148	21.5	36	26	23

d	C	D	D1	D2	E	L1	L2	L3
1	2.441	1.713	4.094	2.362	0.492	1.496	0.748	0.866
1 1/8	2.441	1.831	4.094	2.362	0.492	1.496	0.748	0.866
1 1/4	2.638	1.988	4.094	2.559	0.492	1.496	0.748	0.866
1 3/8	2.756	2.106	4.528	2.677	0.492	1.496	0.748	0.866
1 1/2	2.953	2.224	4.921	2.974	0.579	1.496	0.748	0.866
1 5/8	3.15	2.382	5.236	3.071	0.579	1.496	0.748	0.866
1 3/4	3.189	2.5	5.512	3.11	0.579	1.496	0.748	0.866
1 7/8	3.307	2.618	5.512	3.228	0.579	1.496	0.748	0.866
2	3.425	2.697	5.512	3.346	0.579	1.496	0.748	0.866
2 1/8	3.543	2.815	5.906	3.485	0.689	1.496	0.748	0.866
2 1/4	3.74	3.012	6.102	3.661	0.689	1.496	0.748	0.866
2 3/8	3.937	3.091	6.299	3.958	0.689	1.496	0.748	0.866
2 1/2	4.055	3.209	6.469	3.975	0.689	1.496	0.748	0.866
2 5/8	4.331	3.406	6.693	4.252	0.689	1.496	0.748	0.866
2 3/4	4.724	3.404	7.087	4.648	0.689	1.496	0.748	0.866
2 7/8	4.843	3.858	7.48	4.764	0.689	1.417	1.024	0.906
3	4.921	3.937	7.48	4.843	0.689	1.417	1.024	0.906
3 1/8	5.118	4.135	7.48	5.039	0.689	1.417	1.024	0.906
3 1/4	5.236	4.252	8.661	5.157	0.846	1.417	1.024	0.906
3 3/8	5.315	4.331	8.661	5.236	0.846	1.417	1.024	0.906
3 1/2	5.512	4.528	8.661	5.433	0.846	1.417	1.024	0.906
3 5/8	5.591	4.606	8.661	5.512	0.846	1.417	1.024	0.906
3 3/4	5.709	4.724	8.661	5.63	0.846	1.417	1.024	0.906
3 7/8	5.906	4.921	8.661	5.827	0.846	1.417	1.024	0.906
4	5.906	4.921	8.661	5.927	0.846	1.417	1.024	0.906

**Technical features :**  
 Single cartridge seal  
 Balanced  
 Stationary multiple springs design  
 Springs isolated from media  
 Floating faces

**Operating limits :**  
 Shaft : 25-100mm , 1" - 4"  
 Pressure : 25 Bar  
 Temperature : -40 °C - 200 °C  
 Speed : 25 m/s

**Materials :**  
 Rotary faces : carbon graphite, silicon carbide, tungsten carbide  
 Stationary seats : silicon carbide , tungsten carbide  
 O-rings : EPDM, Viton, Nitrile, other on request  
 Springs : S/S 316, Hastelloy C

Tel : 031-7052020      Fax : 031-7052022      Email : Wilfred@mechseals.co.za

All dimensions and limits are for guidance purposes only. Shaft dimension and medium are critical in determining correct limits. If in doubt contact the above.